

PRECAST SCHEDULE

MOLD NUMBER	MK #	QTY	WIDTH	HEIGHT	LENGTH	VOL. (FT3)	WEIGHT	REBAR
	4	1	8"	119 7/8"	95 1/4"	40	5402	

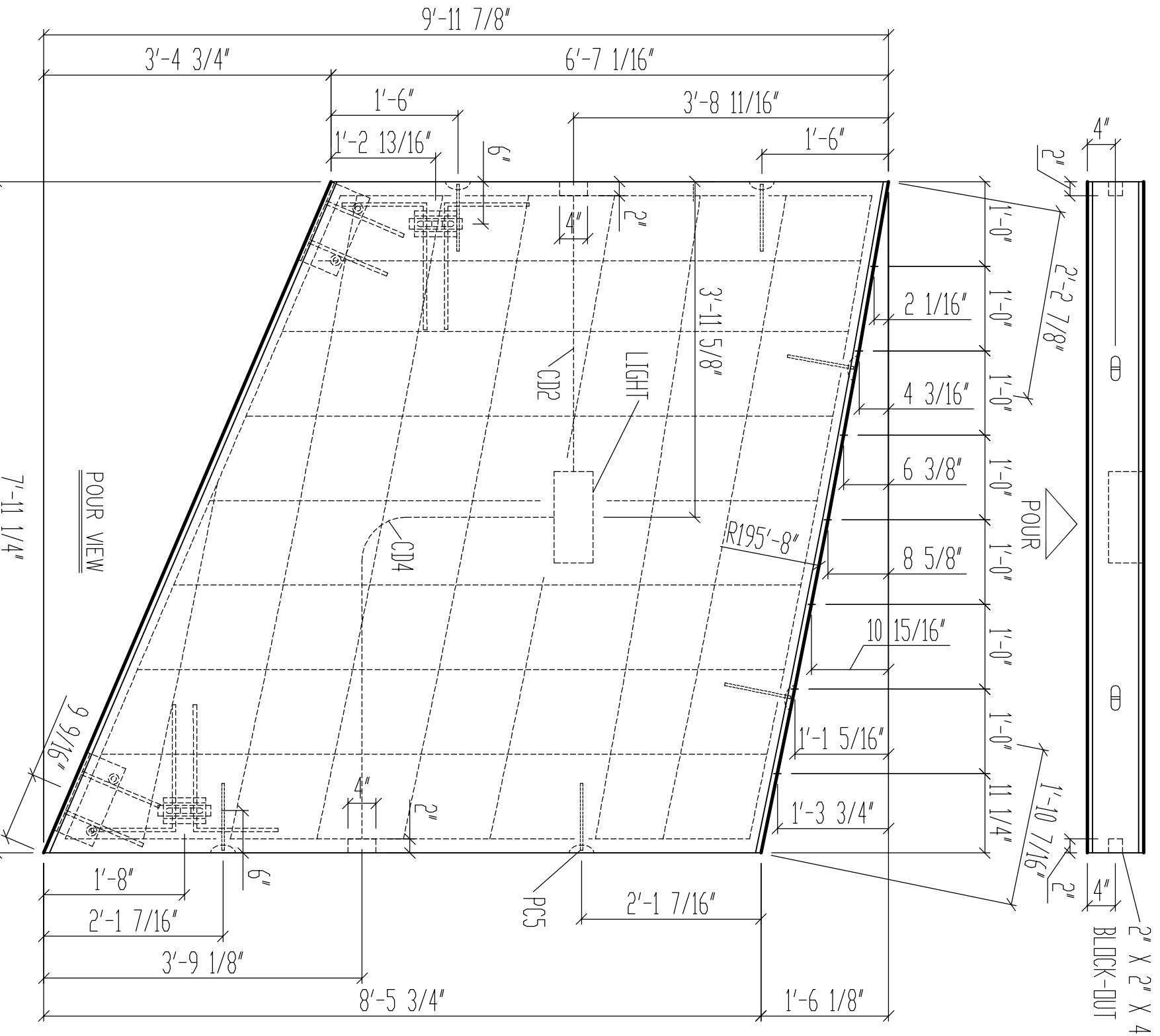
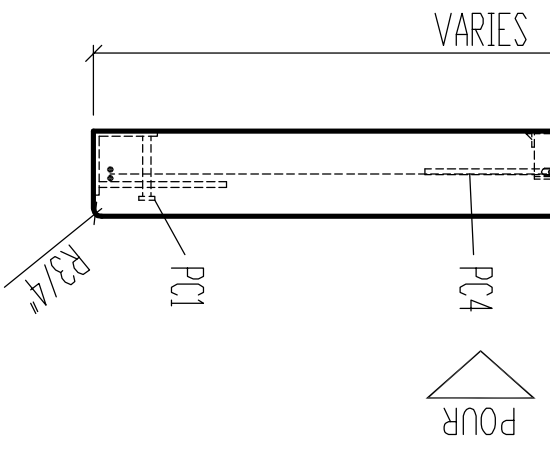
RELEASED FOR PRODUCTION



(2) #5 PERIMETER BARS W/
#5 TIES EACH WAY @ 12" O.C.

PC4

BILL OF MATERIALS		
MARK No.	DESCRIPTION	QTY.
PC5	RL-3 MEADOW BURKE 4 TON ERECTION ANCHOR	6
	W/ STEEL BAR & TENSION BAR	
PC2	CS645 DAYTON SUPERIOR P-30 NUT TYPE	2
	INSERT X 6' LG	
PC4	#4 BENT BAR X 30' LG THRU SLOTTED HOLES	4
PC1	L 6' X 6' X 1/2" X 1'-0" W/ 3/4" X 6' H.S. & (2) 1/2" X 12" DBAS	2
CD2	3'-8" CONDUIT	1
CD4	2'-0" X 3'-8" CONDUIT	1
	METAL LIGHT BOX	1
	LIGHT	
#5	X 1'-11"	4
#5	X 3'-9"	2
#5	X 1'-7"	2
#5	X 7'-9"	3
#5	X 7'-6"	2
#5	X 3'-2"	2
#5	X 4'-4"	1
#5	X 8'-3"	2
#5	X 1'-2"	2
#5	X 3'-5"	2
#5	X 1'-3"	2
#5	X 6'-5"	1
#5	X 6'-8"	1
#5	X 6'-11"	1
#5	X 2'-6"	1
#5	X 7'-5"	1
#5	X 7'-8"	1
#5	X 7'-10"	1
#5	X 4'-0"	2
#5	X 1'-9"	2



NOTE: CONDUIT SHOULD BE STOPPED AT BLOCK-OUT,
CUT TO FIT, AND CONNECT CONDUIT TO LIGHT
BOXES W/ EMT CONNECTORS.



Architectural Ornamental Castings, Inc.

125 North Blanchard St.
Valdosta, Georgia 31601
(229) 241-7407 / 241-7408 Fax
E-mail: aocinc@aocinc.com

PROJECT: GA TECH KLAUS
TITLE: PANEL

DATE: 6/2/06
SCALE: NTS
DRAWN BY: STRIPLING DESIGNS
CHECKED BY:
PROJECT NO: 04053

DRAWING NO: 4
QUANTITY: